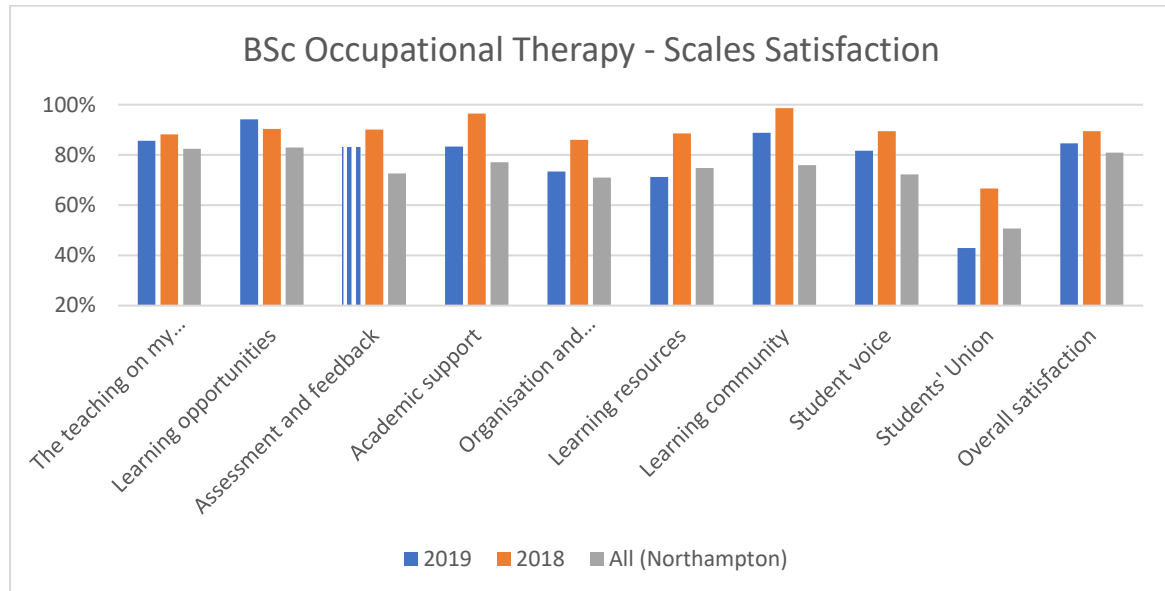


### **BSc Occupational Therapy**

There was a reverse of five ppts in overall satisfaction from last year for BSc Occupational Therapy – however, its statistic of 85% still remains above that for the University. Indeed, approval also fell for course teaching, academic support, and assessment and feedback. Nevertheless, the latter is still hitting its University target, despite a 14-ppt drop in the score for fair marking (Q9). Regarding academic support, all respondents were satisfied with being able to contact staff (Q12) in 2018; now, this statistic now stands at 75%.



Support slipped back on every scale other than learning opportunities, which was boosted by 98% concluding that they had been able to bring ideas together from different topics (Q6). The sample was also uncertain about the programme’s organisation and management, with contentment declining in each of the scale’s three questions by at least 12 ppts.

The provision of placements was recognised by the sample. One said: “There has been an opportunity to evolve outside of the classroom, which has been a great experience. All the placements I have completed have been extremely positive and great learning environments.” Another added: “The lecturers gave us opportunities, where possible, to see OT put into practice and regularly gave us opportunities to meet patients and understand their lived experience.” Respondents also appreciated the communication about placements.

On the negative side, one respondent opined: “When we are on full-time placement ... on top of any work from our educator, I do not think the University should be setting extra tasks for the next module. It is overload.” Moreover, the ‘unreliable’ marking was questioned. Another said: “Every time I submit a project or assignment, I have absolutely no idea of how I will perform academically as every tutor grades so differently. There is a massive lack of consistency.” Room organisation has been ‘very difficult’, while ‘lectures have frequently been cancelled or pushed back’. In 2017-18, there was also a 23-ppt gap in withdrawal rates between white and BAME students.

**RECOMMENDATIONS:** All assignments should have clear and detailed marking rubrics to ensure fair and consistent marking. Better promotion of the MyNorthampton app to staff is required, so that they send out notifications to students in the event of lecture changes. Staff must reduce clashes between due dates and placements, while the BAME withdrawal rate may require investigation.